

THE PARISH OF ST. JOHN BAPTIST, BROUGHTON

Charity Number: 1134595

*Jesus said, "I appointed you to go and bear fruit, fruit that will last." John 15:16
We seek to make Jesus known in our community, through our joyful, loving service and worship*

Fire Emergency - St Peter's -Evacuation

The Fire Assembly point is by the fence facing the main entrance.

There are two main fire escapes:-

If you are in the Hall:-

File out of the Hall through the corridor towards the main entrance.

Lead out of the main entrance. (Note: the inner door next to the office, opens inwards)

Assemble next to the fence which faces the main entrance.

If you in the junior school:-

- (a) File out of the far exit, past Y6 classroom, through the changing room to the assembly point.
- (b) Assemble next to the fence which faces the main entrance.

Note: Jigsaw leaders to take register to assembly point.

When the Fire Alarm is activated, the recess behind the IT suite which houses coat pegs will have the roller shutter door automatically closing.

Note: The Infant side of school must not be used

(Takes you into the Infants playground which is fenced off and gate is locked, but padlock, can be unlocked by the Warden on duty.)

Parents of children in Jigsaw must exit via the main entrance.

Jigsaw leaders will guide the children out of the junior school exit and meet up next to the fence facing the main entrance.

Parents must not go looking for their child as this could cause panic amongst people and we must aim to exit the building as quickly as possible.

Note: Sidespersons and the congregation are briefed on Fire Emergency annually and a test Fire Drill is activated annually.

Location of First Aid box

Exit the hall on the right hand side, down the stairs and Box is recessed on left hand side at end of corridor.

APPENDIX C – St Peter’s Fire Map

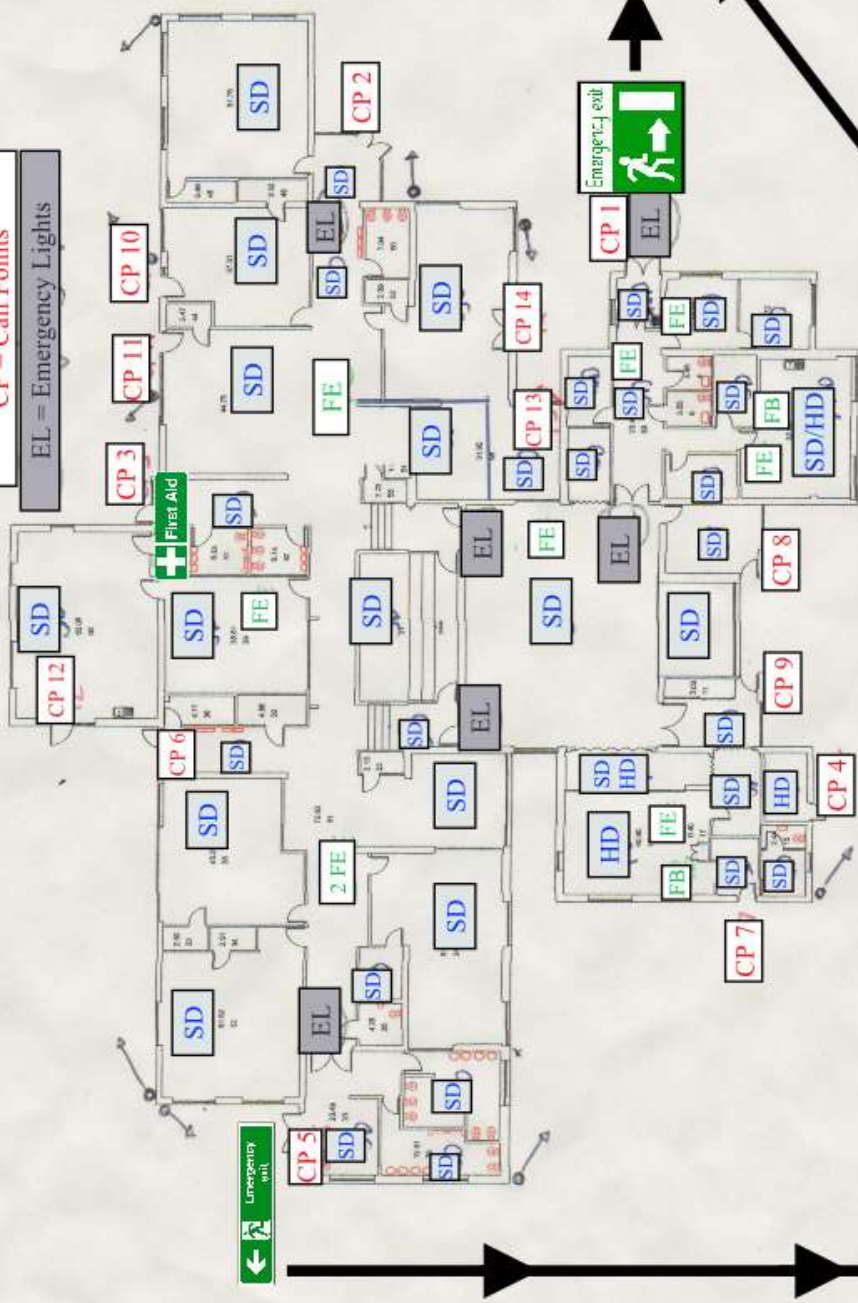
St Peter’s C of E Primary school

HD/SD Smoke/Heat Detectors
 FE = Fire Extinguisher
 FB = Blanket
 CP = Call Points
 EL = Emergency Lights

Health & Safety Comments

TOTAL AREA: 10,000 SQ FT
 GROSS EXTERNAL AREA: 10,000 SQ FT
 GROSS INTERNAL AREA: 10,000 SQ FT
 (DATE: 12/20/2014)

- CP 1 = Main Entrance
- CP 2 = Infant Main Door
- CP 3 = YR Main Door
- CP 4 = Boiler Room
- CP 5 = Junior Main Door
- CP 6 = Y3/4 Door
- CP 7 = Kitchen Door
- CP 8 = Vestry
- CP 9 = Church Chair Store
- CP 10&11 = Outdoor Area
- CP 12 = Y3 Class Door
- CP 13&14 = Y1 Class Doors



Lancashire County Council

REGISTRATION: Property Group B
 OFS OFS Chair Executive

PRESTON
 ST PETER'S C OF E PRIMARY SCHOOL, MADGWICKFIELD, PR3 6RE

Scale: 1/11
 Date: 12/20/2014
 Drawn: [Name]
 Checked: [Name]
 E4

APPENDIX C: PCC of Broughton H&S Policy
St Peter's - Fire Alarms, Fire Extinguishers, Fire Exits & Fire Assembly Point