

THE PARISH OF ST. JOHN BAPTIST, BROUGHTON

Charity Number: 1134595

*Jesus said, "I appointed you to go and bear fruit, fruit that will last." John 15:16
We seek to make Jesus known in our community, through our joyful, loving service and worship*

Fire Emergency - St John's - Evacuation

The Fire Assembly point is on Broughton School / Church Car Park

There are 5 main fire escapes:-

If you are in the Nave:-

Leave via the main north porch entrance doors. (Note: the doors open inwards)

Leave via the south door. (Note: the doors open inwards)

Leave via the tower doors. (Note: not suitable for wheelchairs and the doors open inwards)

If you are in the Choir Stalls, Choir Vestry, Chancel or Sanctuary:-

Leave via the Exit through the Vicar's Vestry (Note: not suitable for wheelchairs and the external door opens inwards)

Leave via the Choir Vestry internal door leading to the external door (Note: the external door opens inwards)

ALL assemble at the Assembly Point on the School / Church Car Park

Note: Jigsaw and Choir and Uniformed Group leaders to take register to assembly point.

Parents of children in Jigsaw and the Choir and Uniformed Groups must exit via their nearest exit points.

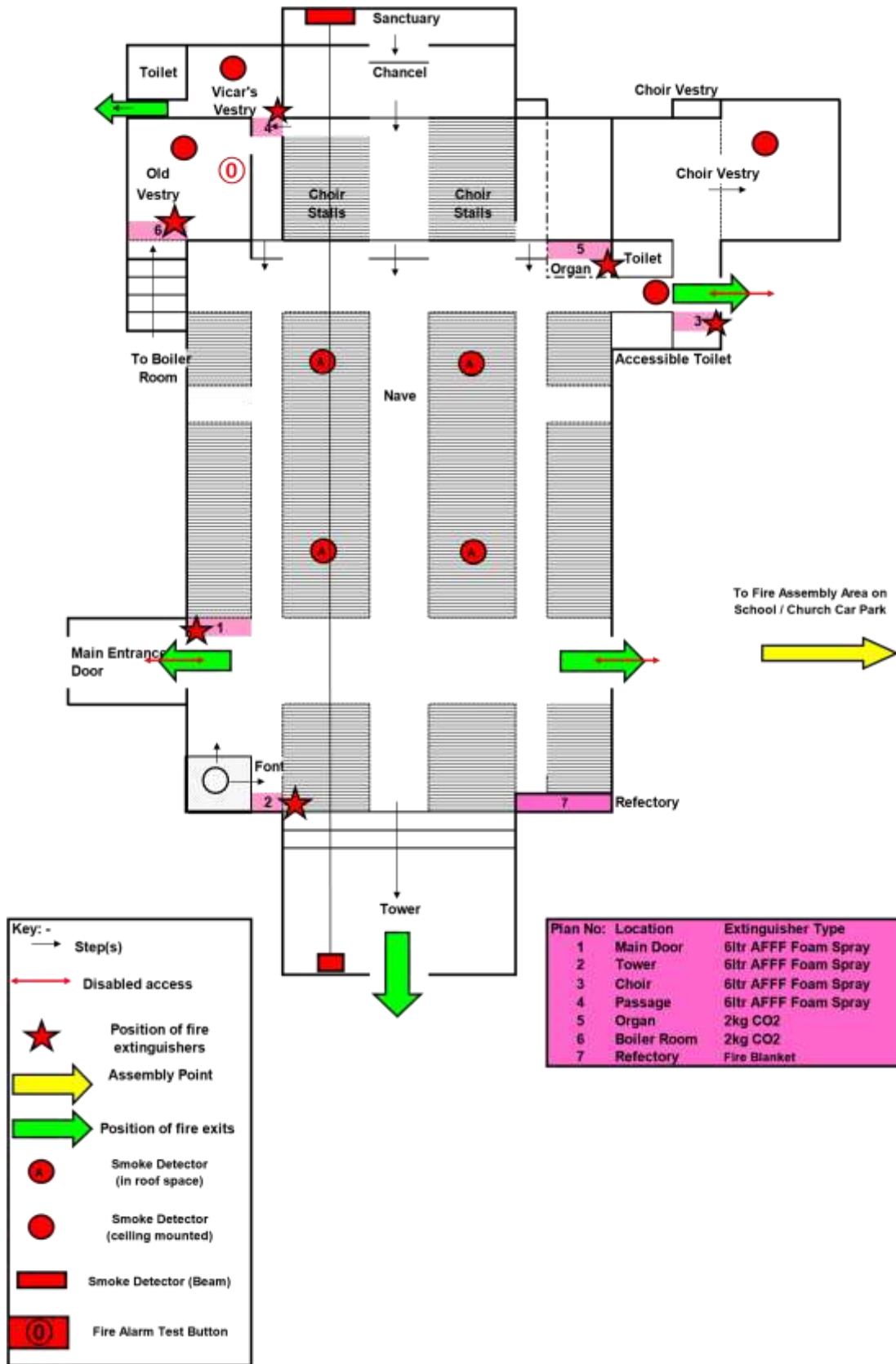
Jigsaw and Choir and Uniformed Group leaders will guide the children out of the church and meet up at the Assembly Point.

Parents must not go looking for their child as this could cause panic amongst people and we must aim to exit the building as quickly as possible.

Note: Sidespersons and the congregation are briefed on Fire Emergency annually and a test Fire Drill is activated annually.

Location of First Aid box - In the Vicar's Vestry

Location of Fire Alarm Test Button – Old Choir Vestry



**APPENDIX A: PCC of Broughton H&S Policy
St John's - Fire Alarms, Fire Extinguishers, Fire Exits & Fire Assembly Point**